

Truss to Low-Pro Hinge Kit

Assembly Instructions

PN 10843

RECOMMENDED TOOLS



Wrenches or sockets:
M14 (or 9/16")
M15 (or 5/8")



Cordless Drill



Rubber Mallet



Screwdriver
(Phillips)



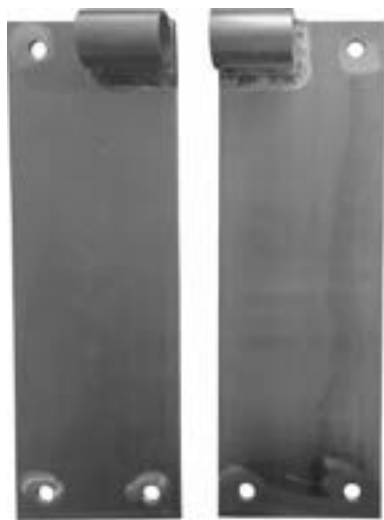
Work Gloves



Truss to Low Pro Hinge Kit

Components

| | PN | Description | Qty |
|---|---------|--|-----|
| A | 10843-1 | Low-Pro Left | 1 |
| B | 10843-2 | Low-Pro Right | 1 |
| C | 10843-3 | Truss Left | 1 |
| D | 10843-4 | Truss Right | 1 |
| E | 10843-5 | Hinge Tube | 1 |
| F | N/A | M6x30mm Button Head Bolt w/ Nylock Nut | 2 |



C

D



B



A



F



E



- 1 Begin with attaching the Low-Pro Left and Right Bracket to your Patriot Low-Pro frame. These brackets will share the Low-Pro frame assembly bolts. Please see image below for reference. When looking directly at the frame end the brackets are mounted to the Left and Rights will seem opposite. When assembled and standing on shore looking out towards your dock the Left and Right will be on the correct side.



- 2 Next, we will mount the Truss Left and Truss Right bracket to your Patriot Truss frame. These brackets will share the Truss frame assembly bolts. Please see image below for reference. These brackets will only work one way. Notice the outside mounting holes on the Truss Left and Right bracket. These will align with the outside mounting holes on the Truss Frame.



- 3 Once all the Hinge brackets are mounted. Bring frames together. The Hinge brackets on the Low-Pro should fit in between the Hinge brackets on the Truss frame. Use Hinge Tube (E) to connect the frames. Insert Hinge tube through all the brackets. Use M6x30mm Button Head Bolt and Nylock Nut to secure Hinge tube. See images below for reference.

